



Paragon PW750F two stage  
Drinking Water Filtration System

**Installation & Operation Manual**



Marketed & Distributed in Singapore by:  
Quantum Impact Pte Ltd (UEN 201014570H)  
Tel: (65) 9001-6441  
Website: <https://www.waterfilter.com.sg/>



Thank you for chose Paragon PW750F 2-Stage Drinking Water Filtration System. We hope that this product will provide you with years of service to your home life. Please read this manual carefully before use.

### Notice

The water filter is used for municipally treated tap water with safe microorganism test results. Do not use with water that is microbiologically unsafe or of unknown quality without adequate disinfection before or after the system.

### Paragon Water Systems

American Paragon Water Systems is an ODM provider of certified water filtration solutions along with full life cycle support for our customers. We can meet your manufacturing needs with facilities in both the USA & China. All factories and products certified by NSF, WQA, IAPMO, Chinese MoH, ISO, and others.

We take great pride in our craftsmanship and use of premium quality materials sourced from both domestic and international suppliers. Couple with innovative design capabilities and state of the art production facilities Paragon is able to meet customer’s product application specifications and exceed expectations.

★This Drinking Water System reduces the following contaminants:

- Reduce sediment, rust, silt.
- Reduce chlorine taste and odor.
- Reduce microbial cysts.
- Reduce Atrazine & Lindane.
- Reduce lead.

★This water filter is easily installed using common household tools. The system mounts under your sink and is plumbed to a separate filter faucet provided. Replacement of cartridge is easy and requires no tools.

★Built in shut off valve. Replace cartridges without turning off cold water line.

★This Drinking Water System features a highly engineered design and offers superior performance. No storage tank is necessary and no wastage of water is incurred.

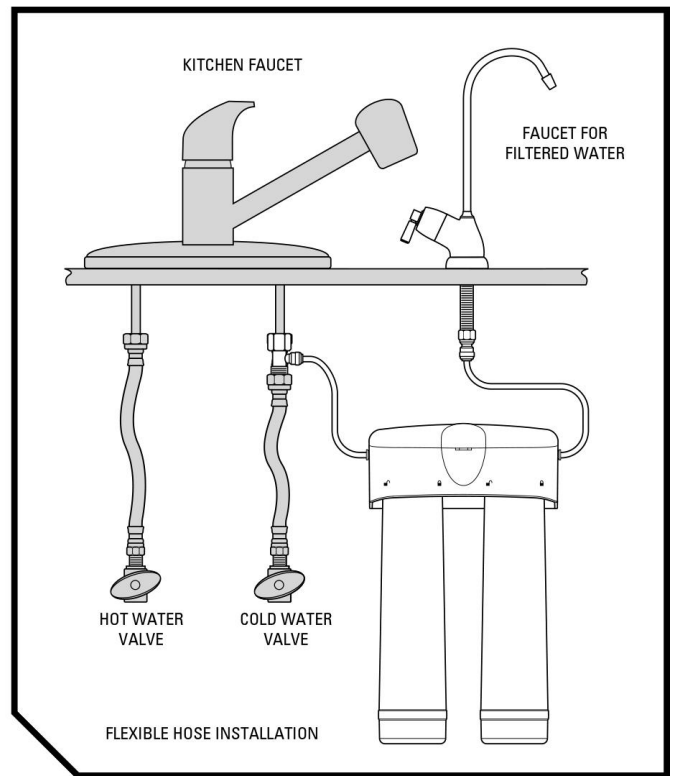
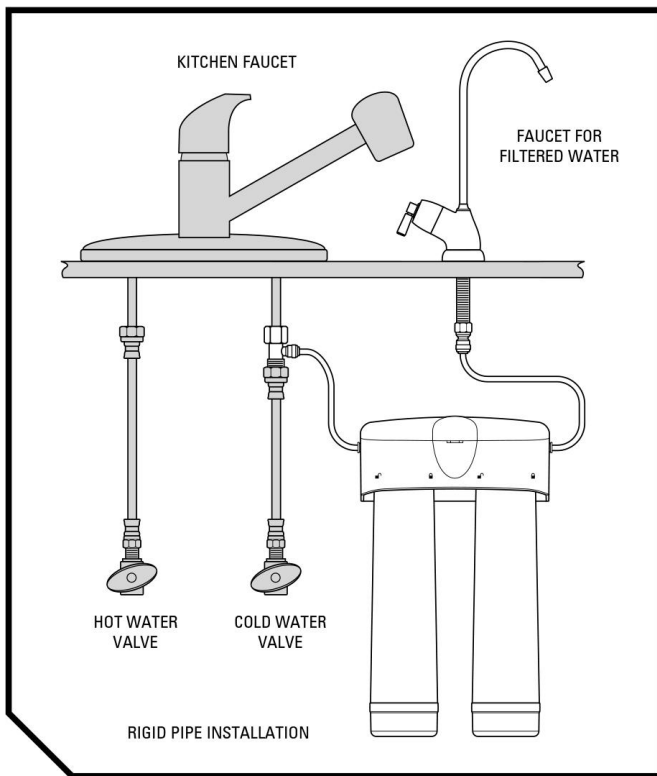
### Technical parameters

<b>Model</b>	PW750F
<b>Flow Rate</b>	4.1 L/m (1.1 gpm)
<b>Temperature</b>	5-38°C
<b>Pressure</b>	30-100psi
<b>Capacity</b>	750Gallons / 2,839Litres
<b>Standard</b>	NSF 42 & 53

### Installation & Operations

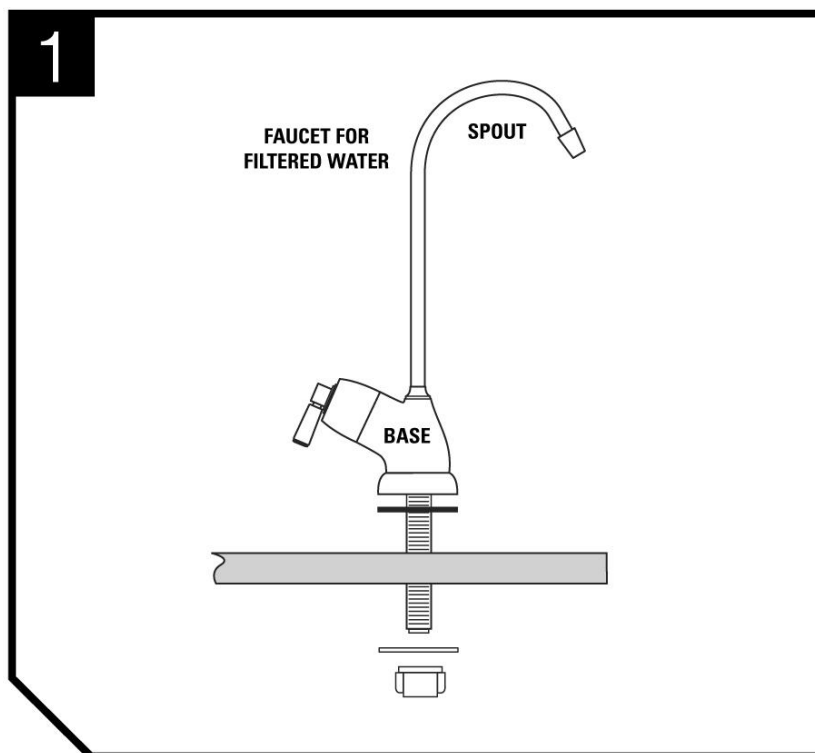
PW750F is a wall mounted under-counter product. It can also be used as a filtration before coffee machine,

refrigerator, ice maker, etc



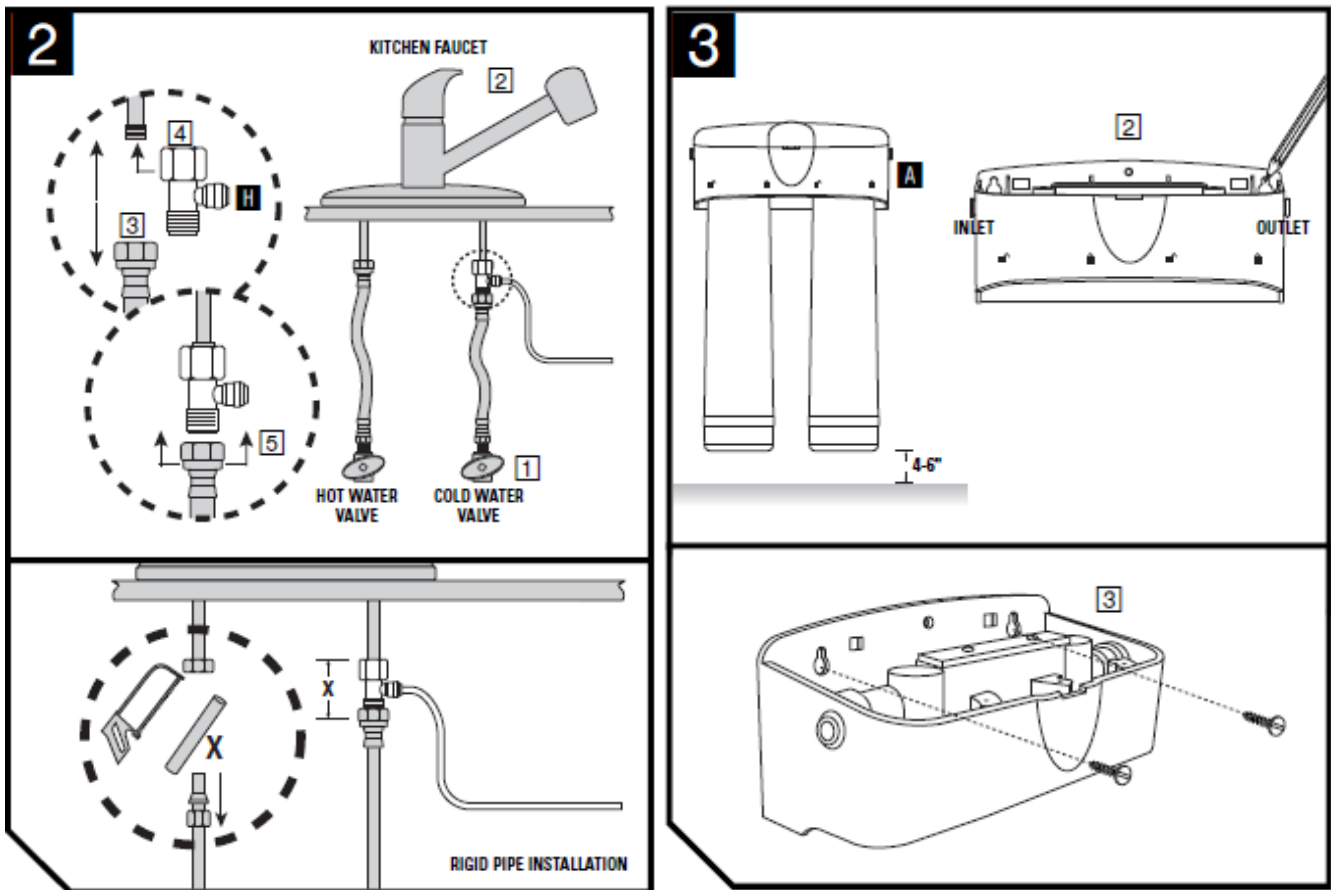
**Note: Mount only in a vertical position! For cold water use only!**

**Step 1:** Install faucet. Dig a hole at the appropriate place in the sink, put the faucet into it and fix it.



**Step 2:** Install T-adapter. Shut off the water. Turn on the kitchen faucet to release pressure and allow water to completely drain from the line. Disconnect the valve of cold tap water. Then screw the T-adapter onto it. Finally, Screw the cold water supply line to the T-adapter.

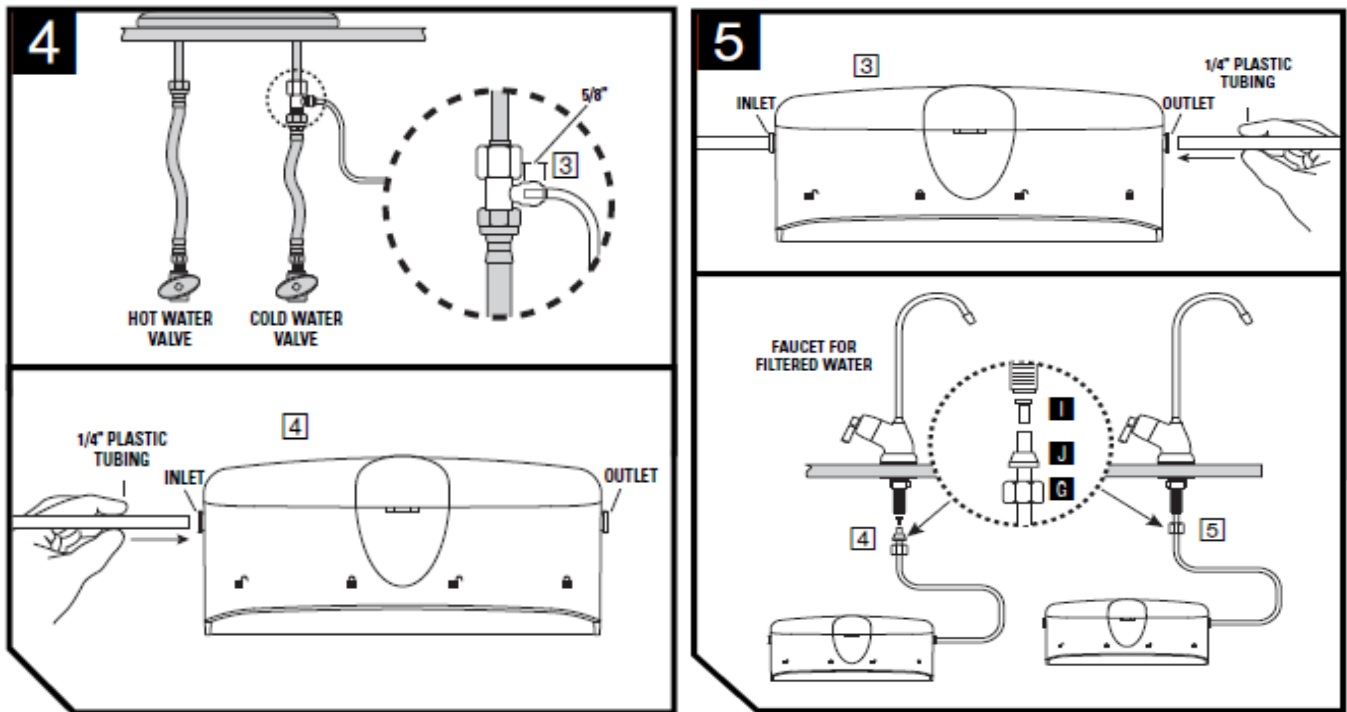
**Step 3:** Mount the system head. Remove the cap from the top of the system head. Using the built-in bracket on the back of the system head as template, mark the holes for the mounting screws on the wall surface. Drill two pilot holes for the mounting screws. Insert mounting screws into the wall. Hang the system head on the eyes of the bracket and replace the system head cap.



**Step 4:** Install 1/4" plastic tubing for water supply line from T-adapter to system head inlet.

**Step 5:** Cut plastic tubing squarely on both ends. Install 1/4" plastic tubing for water supply line from system head outlet to faucet.

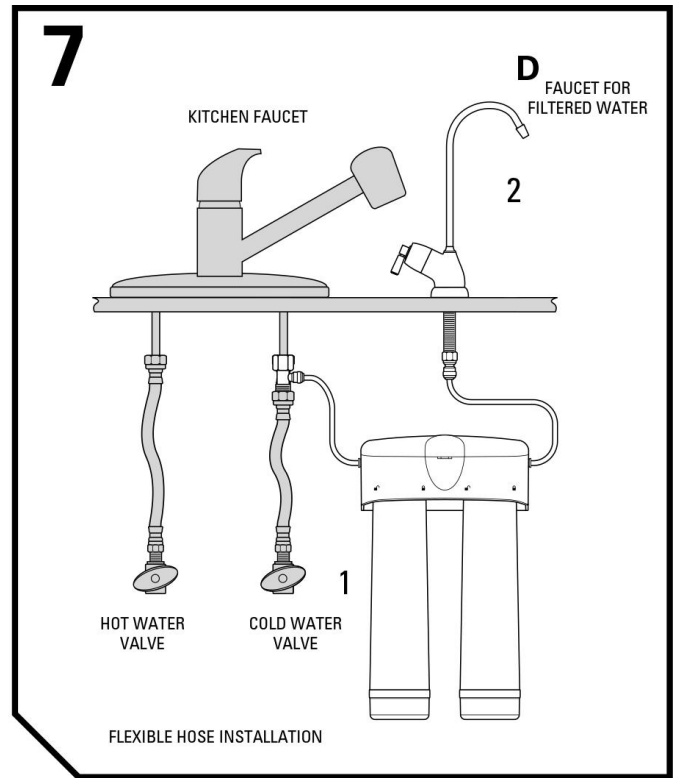
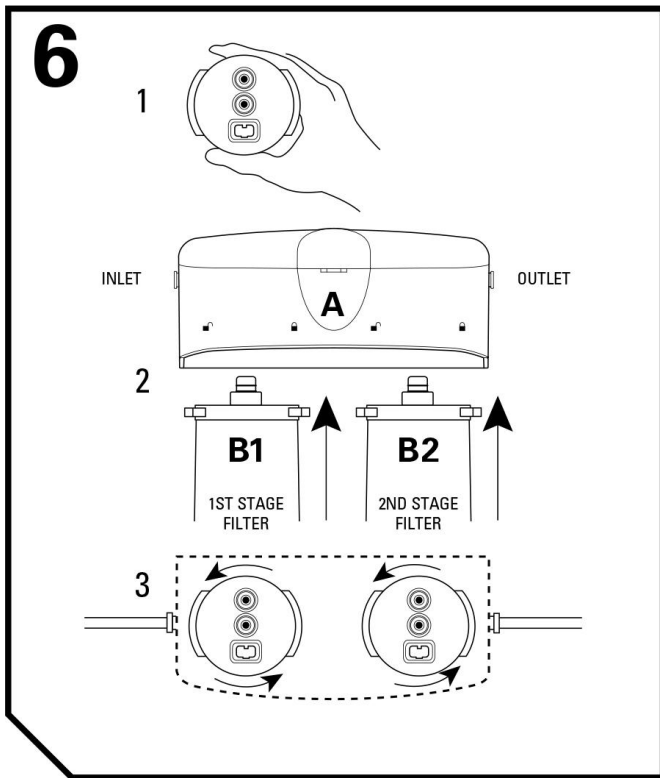
**Note:** Do not bend or crimp 1/4" plastic tubing when inserting. Do not over tighten the compression nut. Make sure there is no leak.



**Step 6:** Install the twist off filters. Lift each twist off filter straight up into the system head until the two nozzles seat into the ports and the two extended flanges on top of the twist off filter are fully engaged into the system head. Turn each twist off filter counter-clockwise until it stops.

**Step 7:** Test the filter system for proper operation. Turn on the cold water shut-off valve under the sink. Turn on the new faucet for filtered water. In order for the filter system to flush out any air and carbon fines (fine black powder) from each twist off filter, allow the water to run for approximately 10 minutes. Check the connections to be sure that there is no leak.

**Notice:** For the first time use, please be sure to run water for at least 10 minutes. If the machine hasn't been used for several days, please run water for more than 3 minutes to make sure the machine provides fresh water.



After finished installation, record the installation date for future reference.

### Maintenance

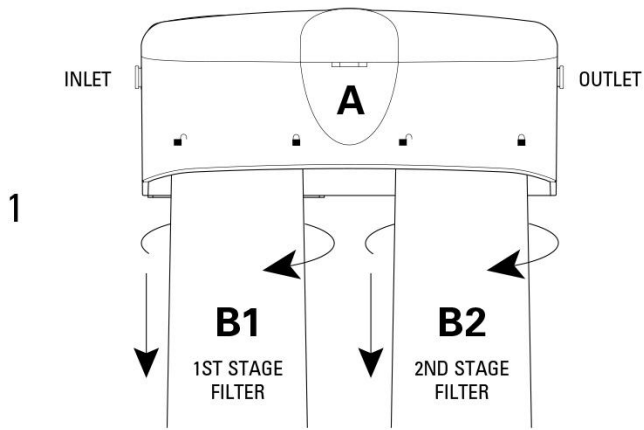
Replace cartridge when capacity is reached or when flow becomes too slow. About replace once a year.

#### Cartridge Change Procedure:

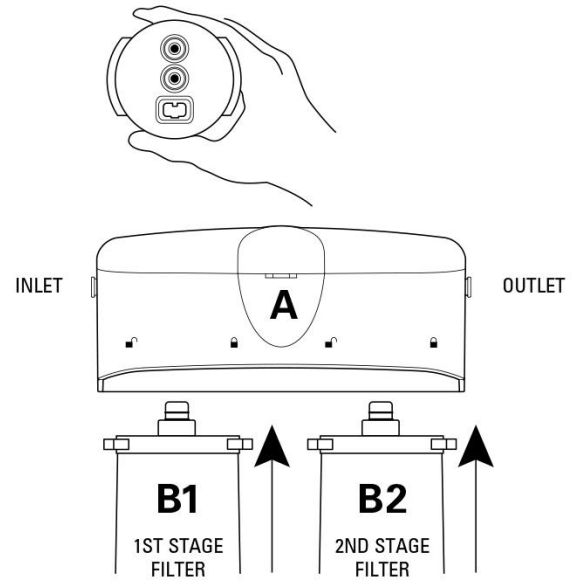
1. Turn off the cold water shut-off valve. Turn each filter cartridge clockwise until it releases. Gently pull down on each used cartridge to remove it from the system head. Discard the used cartridges.

**Note: Place a pan or bucket under the filter system to catch any water drips.**

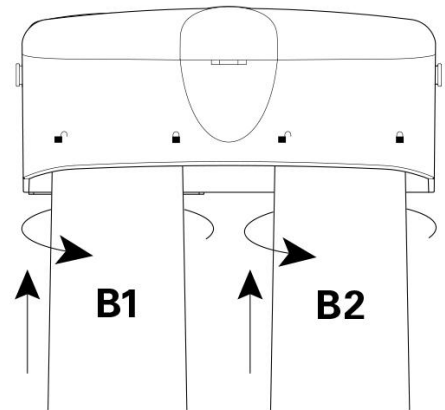
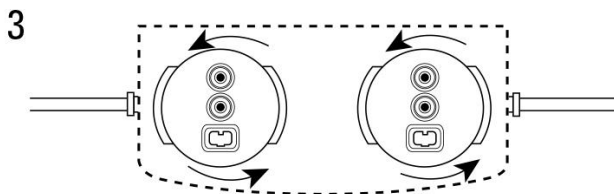
2. Hold each new filter cartridge with the label facing to the left slightly. The two nozzles on top of each filter should be toward the back of the filter. Lift each filter straight up into the system head until the two nozzles seat into the ports and the two extended flanges on top of the filter are fully engaged into the system head.



2






3. Turn each Filter cartridge counter-clockwise until it stops.



4. Turn on the cold water shut-off valve and the faucet for filtered water and check for any leaks. Note the replacement date.

5. Run water through faucet for 10 minutes to pre-coat and purge cartridge of air. Check for leaks once more before completion.

## Package Contents

No.	Description	Units	Remark
1	Filter system	1	
2	Faucet	1	
3	T-adapter	1	
4	1/4" plastic tubing	1	
5	Manual	1	